



Prince's Trust

HEALTH AND SOCIAL CARE

In partnership with the

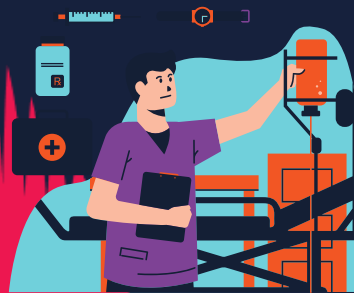


**Recently lost your job due to COVID-19?
Looking to re-train in a new career?
Are you aged between 16 - 30?**

The Prince's Trust, in partnership with the NHS and local health and social care providers, are looking for new recruits!



Admin



Clinical / Care



Catering



Facilities



Domestic



Apprenticeship



Prince's Trust

HEALTH AND SOCIAL CARE

In partnership with the



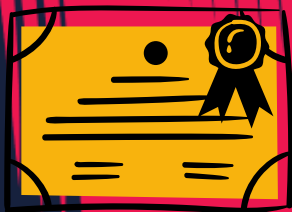
Sign-up process...



Step 1 - Referrals and Assessment

If you are aged 16-30, please get in touch. You will be asked to complete a basic assessment form, so our training team can place you onto the correct pathway.

Email; peter.hennessey@princes-trust.org.uk



Pathway 1 - Online Training

You may join this pathway because you need some more training before starting a job. On this pathway you will complete a level 1 qualification in health and social care before being supported in to a job.



Pathway 2 - Get Hired!

If you join this pathway it is because you are suitable and ready to work right away. Our employment team will prepare you for immediate interviews with local health and social care employers.

**CONFIDENCE
COURSES
CAREERS**